



CLEMENTS  
HABBA



For Sale

Burnaby Gardens, Chiswick, London

**£500,000**

Leasehold - Share of Freehold



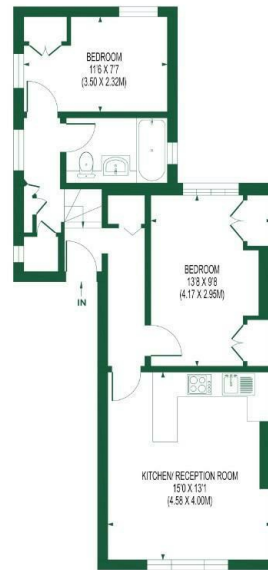
- First Floor Two Bedroom Flat
- Share Of Freehold
- Stylish Bathroom
- Chain Free
- Service Charge - Buildings Insurance Contribution
- End Of Terrace Period House
- Double Glazed Sash Windows
- Open Plan Kitchen Living Room
- Ground Rent - £0
- Beautiful Residential Chiswick Location

## THE PROPERTY

Stylish Two-Bedroom first floor Flat, with a share of freehold located on a desirable, wide and quiet tree-lined Street, in Chiswick's Grove Park area.

### BURNABY GARDENS

APPROX. GIA: 592 SQ. FT/55.04 SQ.M



FIRST FLOOR

FOR ILLUSTRATION PURPOSES ONLY  
THIS FLOOR PLAN SHOULD BE USED AS A GENERAL OUTLINE FOR GUIDANCE ONLY AND DOES NOT CONSTITUTE IN WHOLE OR IN PART AN OFFER OR CONTRACT.  
ANY INTENDING PURCHASER OR LESSEE SHOULD SATISFY THEMSELVES BY INSPECTION, SURVEY, ENQUIRIES AND FULFILLING AS TO THE CORRECTNESS OF EACH STATEMENT.  
ANY AREAS, MEASUREMENTS OR DISTANCES QUOTED ARE APPROXIMATE AND SHOULD NOT BE USED TO VALUE A PROPERTY OR BE THE BASIS OF ANY SALE OR LET.

**CLEMENTS  
HABBA**



Clements Habba Ltd.  
Building 3, Chiswick Park, 566 Chiswick High Rd,  
Chiswick, London W4 5YA